

GOVAL
I T A L Y 



STAINLESS STEEL FITTINGS BUTTWELD & THREADED

Goval Italy S.r.l
Via I Maggio 13 - 20090 ,
Segrate, Milano,
Italy.

Tel: (+39) 334 710 5173
E-mail: govalit@govalit.com
www.govalit.com



Stainless Steel Fittings

THREADED LOW PRESSURE 150 LB BSP 316 FITTINGS



Product range and theoretical weights (kg)

DN	Round socket	Pipe nipple TBE	Pipe nipple TOE	Hex/round cap	Hex nipple	3 pce union	Female 90° elbow	Male/fem 90° elbow	Female tee	Hex head plug	Hex locknut	Square head plug
1/8	0.02	0.02	0.01	0.02	0.02	0.13	0.03	0.02	0.05	0.02	0.02	0.01
1/4	0.04	0.03	0.02	0.03	0.03	0.11	0.04	0.04	0.05	0.03	0.02	0.02
3/8	0.05	0.04	0.03	0.03	0.05	0.18	0.06	0.06	0.09	0.03	0.03	0.03
1/2	0.09	0.08	0.05	0.07	0.08	0.22	0.10	0.11	0.14	0.05	0.04	0.03
3/4	0.13	0.11	0.08	0.10	0.11	0.33	0.14	0.16	0.21	0.09	0.05	0.07
1	0.20	0.16	0.11	0.17	0.17	0.50	0.27	0.26	0.36	0.12	0.10	0.10
1 1/4	0.29	0.29	0.19	0.24	0.25	0.70	0.38	0.40	0.50	0.19	0.14	0.15
1 1/2	0.34	0.35	0.23	0.38	0.37	0.87	0.51	0.50	0.70	0.27	0.15	0.21
2	0.52	0.58	0.30	0.47	0.53	1.39	0.75	0.82	1.01	0.40	0.25	0.31
2 1/2	0.78	0.92	0.57	0.85	1.14	2.07	1.69	1.68	2.41	0.76	0.51	0.59
3	1.05	1.45	0.86	1.24	1.37	2.98	2.33	2.06	3.32	1.03	0.55	0.71
4	1.90	2.07	1.38	2.09	1.90	4.82	3.43	3.45	4.81	1.66	0.92	1.10

TBE = Threaded Both Ends
 TOE = Threaded One End

Stainless Steel Fittings

THREADED LOW PRESSURE 150 LB BSP 316 FITTINGS



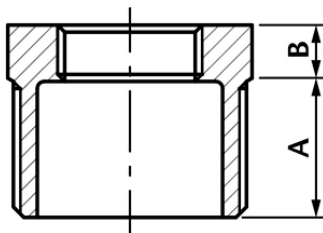
BSP Fittings

Dimensions: generally to ISO4144.

Threading: BS21 (ISO 7-1).

Feed materials – sockets, TOE nipples, TBE nipples manufactured from stainless steel pipe to ASTM A312M.

- Other fittings made from investment castings.



HEX REDUCING BUSH

Nominal Diameter (inch)	A (mm)	B (mm)	Weight (kg)
1/4 x 1/8	12	6.5	0.013
3/8 x 1/4	14	6.5	0.021
1/2 x 1/4	16.5	7.5	0.035
1/2 x 3/8	17	7	0.031
3/4 x 1/2	18	8	0.048
1 x 1/2	19	8	0.081
1 x 3/4	19	8	0.067
1 1/4 x 1/2	20.5	9	0.143
1 1/4 x 3/4	20.5	9.5	0.141
1 1/4 x 1	20.5	9.5	0.114
1 1/2 x 3/4	22	9	0.197
1 1/2 x 1	22	9	0.176
1 1/2 x 1 1/4	22	9	0.121
2 x 1	26	9	0.328
2 x 1 1/4	26	9	0.269
2 x 1 1/2	26	9	0.228
2 1/2 x 2	27	8	0.445
3 x 2	33	11	0.795
3 x 2 1/2	33	11	0.589
4 x 2	36	12	1.492
4 x 3	36	12	1.203

Stainless Steel Fittings

THREADED LOW PRESSURE 150 LB BSP 316 FITTINGS



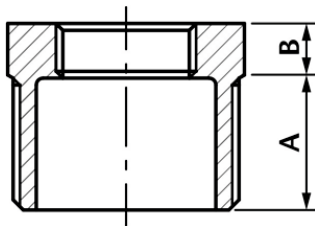
BSP Fittings

Dimensions: generally to ISO4144.

Threading: BS21 (ISO 7-1).

Feed materials – sockets, TOE nipples, TBE nipples manufactured from stainless steel pipe to ASTM A312M.

- Other fittings made from investment castings.



HEX REDUCING NIPPLE

Nominal Diameter (inch)	A (mm)	B (mm)	Weight (kg)
1/4 x 1/8	12	6.5	0.013
3/8 x 1/4	14	6.5	0.021
1/2 x 1/4	16.5	7.5	0.035
1/2 x 3/8	17	7	0.031
3/4 x 1/2	18	8	0.048
1 x 1/2	19	8	0.081
1 x 3/4	19	8	0.067
1 1/4 x 1/2	20.5	9	0.143
1 1/4 x 3/4	20.5	9.5	0.141
1 1/4 x 1	20.5	9.5	0.114
1 1/2 x 3/4	22	9	0.197
1 1/2 x 1	22	9	0.176
1 1/2 x 1 1/4	22	9	0.121
2 x 1	26	9	0.328
2 x 1 1/4	26	9	0.269
2 x 1 1/2	26	9	0.228
2 1/2 x 2	27	8	0.445
3 x 2	33	11	0.795
3 x 2 1/2	33	11	0.589
4 x 2	36	12	1.492
4 x 3	36	12	1.203